



**File Name:** bunn grinder g9 manual.pdf

**Size:** 1503 KB

**Type:** PDF, ePub, eBook

**Category:** Book

**Uploaded:** 25 May 2019, 14:36 PM

**Rating:** 4.6/5 from 664 votes.

**Status:** AVAILABLE

Last checked: 9 Minutes ago!

**In order to read or download bunn grinder g9 manual ebook, you need to create a FREE account.**

[\*\*Download Now!\*\*](#)

eBook includes PDF, ePub and Kindle version

[Register a free 1 month Trial Account.](#)

[Download as many books as you like \(Personal use\)](#)

[Cancel the membership at any time if not satisfied.](#)

[Join Over 80000 Happy Readers](#)

### Book Descriptions:

We have made it easy for you to find a PDF Ebooks without any digging. And by having access to our ebooks online or by storing it on your computer, you have convenient answers with bunn grinder g9 manual . To get started finding bunn grinder g9 manual , you are right to find our website which has a comprehensive collection of manuals listed.

Our library is the biggest of these that have literally hundreds of thousands of different products represented.



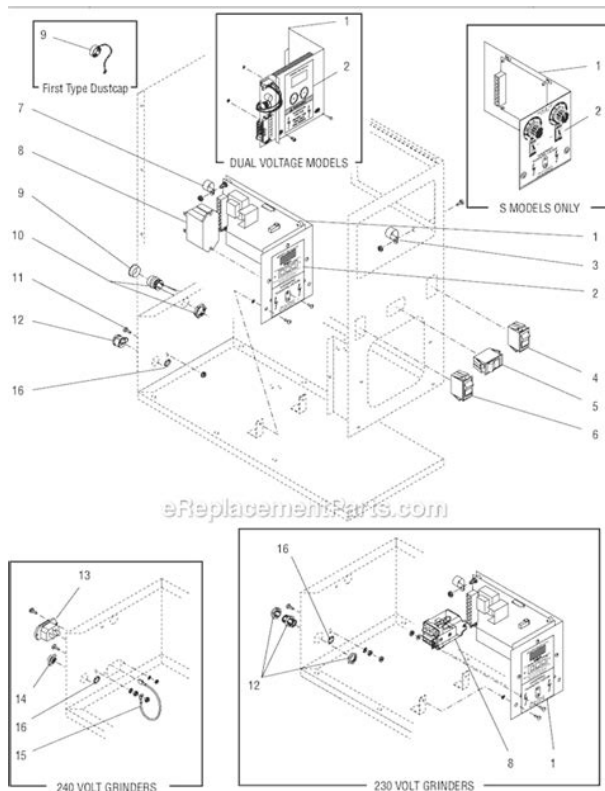
## Book Descriptions:

# bunn grinder g9 manual



For Technical Service, contact BunnOMatic Corporation at 18002866070. For Technical Service, contact BunnOMatic 18002866070. NOTE Replacement parts or service caused by failure to perform required maintenance is not covered by warranty. Place a paper filter into the brew funnel. The filter must not be folded over or tilted to one side. Insert the funnel into the funnel rails and push until it stops. Momentarily place the switch in the "START". All are referenced from the arrow position noted in step 6. FINE GRIND Rotate the adjusting screw 7 hash marks in a counterclockwise direction. DRIP GRIND Rotate the adjusting screw 8 hash marks in a counterclockwise direction. REGULAR COARSE GRIND Rotate the adjusting screw 12 hash marks in a counterclockwise direction. Contact BunnOMatic Corporation at 18002866070 to obtain a paper Contact BunnOMatic Corporation at 18002866070 to obtain a paper copy of the required Illustrated Parts Catalog mailed via U.S. Postal Service. Care should be taken not to scratch the windows with any abrasive material. Regular cleaning will keep your grinder looking new for years. The following settings approximately correspond to the CBC recognized grinds. All are referenced from the arrow position noted in step 7. FINE GRIND Rotate the adjusting screw 7 hash marks in a counterclockwise direction. Grinder starts, but will not dispense. Incorrect amount of coffee. Incorrect coffee grind dispensed. Refer to Troubleshooting for assistance in determining the cause of any problem. WARNING Inspection, testing, and repair of electrical equipment should be performed only by qualified service personnel. Test Procedure Remove the hole plug located on the right side of the housing. Removal and Replacement Remove all the wires from the switch terminals. Compress the clips inside the housing and gently push the switch through the opening. Push the new switch into the opening and spread the clips to hold the switch in the housing. <http://burgasegueros.com/userfiles/dekart-sim-card-reader-manual.xml>

- **bunn g9 grinder manual, bunn g9 grinder service manual, bunn g9 grinder parts manual, bunn g9 coffee grinder manual, bunn g9 series grinder manual, bunn g9 series coffee grinder manual, bunn grinder g9 manual, bunn grinder g9 manual download, bunn grinder g9 manual pdf, bunn grinder g9 manual instructions, bunn grinder g9 manual free.**



The bracket can be removed by loosening the two 832 screws beneath the timer dials. Test Procedure Disconnect the grinder from the power supply. You should have JavaScript enabled in your browser to utilize the functionality of the website Parts Town and 3Wire have joined forces and teamed up with IPC, combining the team you know with the largest inventory in the industry and cuttingedge technology to give you the absolute best experience. Things look a little different, that's true, but you are indeed in the right place. Hi there, welcome to Parts Town. Parts Town and 3Wire have joined forces and teamed up with NDCP, combining the team you know with the largest inventory in the industry and cuttingedge technology to give you the absolute best experience. Parts Town and 3Wire have joined forces and teamed up with SMS, combining the team you know with the largest inventory in the industry and cuttingedge technology to give you the absolute best experience. Hi there! RSCS and Parts Town have joined forces, combining the team you know with the largest inventory in the industry and cuttingedge technology to give you the absolute best experience. Parts Town and 3Wire Foodservice have joined forces. Now you'll work with the great team you know, while having access to the largest inventory in the industry and cuttingedge technology. Lets go! Continue to Parts Town What You Can Expect Always Genuine OEM The Most InStock Parts on the Planet Breakthrough Innovations Exceptional Customer Experience Same Day Shipping Ready to get started. Lets go! Continue to Parts Town Looking for beverage equipment parts. Marmon Link is the new home for genuine OEM parts for the Marmon family of equipment manufacturers. Find beverage dispense parts and accessories, as well as parts for Cornelius, Prince Castle, Silver King, Angelo Po, and Saber King units. Continue to Marmon Link Please try again. Please try again later. Please try again later. No worries, it's really easy. <http://www.kristel.ru/files/dekati-mass-monitor-manual.xml>



No need to remember another username, you will now use your email address. Its listed below. Once logged in you can view pricing and order these parts. OK Please try again. Always Available free backorder shipping applies to UPS Ground shipments only. Excludes international orders, UPS Freight orders, consolidated shipments, factory drop ship orders, and ship complete orders. Program details subject to change at any time. No need to type it all again. That just makes things WAY easier. Plus, youll be able to access any discounts or contract pricing that may be available to you. Thats important. The real question is, why wouldnt you log in Everybody loves cookies. Okay, theyre not those kind of cookies, but theyre still great. For more information, go to [www.p65warnings.ca.gov](http://www.p65warnings.ca.gov). Please try refreshing the page, or contact us at 800 6262866 if the problem continues. Your selected catalog region indicates that you are outside the U.S. Please change your region to North America U.S. if you wish to check out. For international orders please call us at 1 217 529 6601. Page 3 Warranty and Trademark CONTENTS Model G9WD d c. Grind Pad a. Pressing initiates a grind cycle. Stop Pad b. Pressing ends. Page 7 OPERATING CONTROLS Continued. Model G9 Placing the switch in this position stops the operation. Page 8 OPERATING CONTROLS Continued Model MHG. Grind Pad a d. Pressing initiates a timed grind cycle. d. Stop Pad b. Page 9 OPERATING CONTROLS Continued. Model FPG Problem Probable Cause Remedy. Grinder will not start. Continued 5. Motor Each motor is equipped with a Grinder starts, but will not dispense 1. Hoppers Begin each grind cycle by visually Page 15 Bag Sensor SERVICE Cont.. BAG SENSOR SWITCH Models G1, G2, G3 or Page 16 Motor and Grind Chamber SERVICE Cont.. AC MOTOR AND GRIND CHAMBER cont. Install burr rotor. Page 18 SERVICE Cont.. AC MOTOR AND GRIND CHAMBER cont. DC MOTOR AND GRIND CHAMBER G1MD ONLY BLU to BLU from Rectifier. Page 21 SERVICE Cont. Page 27 SERVICE Cont..

MOTOR Models G9, G92, MHG SNUBBER Models G9, G92, MHG Grinder Scale Model G9WD only Capacitor Model LPG only Page 31 Circuit Breaker SERVICE Cont.. Circuit Breaker Models LPG, LPG2E, FPG, FPG2 DBC Page 32 Hopper Selector Switch SERVICE Cont.. Hopper Selector Switch Model LPG2E only Hopper Selector Switch Model G92 only Page 36 Batch Selector Switch SERVICE Cont.. Batch Selector Switch Model FPG Potentiometer Model FPG Page 38 Rectifier SERVICE Cont.. Rectifier Models G1 MD, FPG2 DBC Relay Early Model G9 Page 41 SERVICE Cont.. RELAY cont.. Removal and Replacement 120 Volt and 240V 60 Hz Removal and Replacement 230 volt 50 Hz. Page 42 SERVICE Cont.. Relay Models MHG, FPG2 DBC, Late Model G9, G92, G92 DBC Page 43 Hopper Slide Plates SERVICE Cont.. Hopper Slide Plates Models G92, G92 DBC Hopper Slide Plates Models MHG Solenoids Models MHG, FPG2 DBC, LPG2, G92, G92 DBC Timer Model LPG2E Page 47 SERVICE Cont.. Timer Model LPG2E Timer Model G9 Page 49 SERVICE Cont.. Timer Model G92 Page 50 Control Board SERVICE Cont.. Control Board Model MHG Page 52 Membrane Switch SERVICE

Cont.. Membrane Switches Model MHG onlyPage 54 EMI Filter SERVICE Cont.Page 56 Memory Clock Board SERVICE Cont.. Memory Clock Board Model MHGDisplay Board Model MHG. Removal of the hopper will also require disconnection of the solenoid wires from the grinder wiring harness. The grinder should be unplugged when servicing, except when electrical tests are required and the test procedure specifically states to plugin the grinder. Electrically ground the chassis. Do not use near combustibles. From 4 seconds to 150 seconds in time. If plate spacing is giving you the right coarseness, timing is adjustable. First adjust the coarseness of the grind is correct. To fine slows the coffee threw the filter. To coarse waste coffee. Then adjust the volume with the timer. Not knowing if you have the digital or manual timers, I'll include a manual for you to reference. Page 8 has your adjustments.

**BUNN® GRINDERS**  
*Includes: MHG, FPG,  
 FPG-2, LPG-2, G1, G2, G3,  
 G9, G9-2 & G9-2T DBC*



**NOTICE**

The Service and Repair manual for the BUNN Grinder family, is currently in progress.

For your convenience, we have provided Electrical Schematic Diagrams on the following pages.

Thank you for your patience.



**SERVICE & REPAIR MANUAL**

**BUNN-O-MATIC CORPORATION**  
 POST OFFICE BOX 3227  
 SPRINGFIELD, ILLINOIS 62708-3227  
 PHONE: (217) 529-6601 FAX: (217) 529-6644

To ensure you have the latest revision of the Operating Manual, or to view the Illustrated Parts Catalog, Programming Manual, or Service Manual, please visit the Bunn-O-Matic website, at [www.bunn.com](http://www.bunn.com). This is absolutely FREE, and the quickest way to obtain the latest catalog and manual updates. For Technical Service, contact Bunn-O-Matic Corporation at 1-800-286-6070.



.0000A 06/09 ©2009 Bunn-O-Matic Corporation

<http://gbb.global/blog/3gs-iphone-manual-pdf>

Name This field is for validation purposes and should be left unchanged. Page Count 79 Catalog, Programming Manual, or Service Manual, please visit the BunnOMatic website, atThese warranty periods run from the date of installation BUNN warrants that the equipment manufactured by it will beThis warranty does not apply to any equipment, component or part that was not manufacturedThis warranty is conditioned on the Buyer 1 giving BUNNBUNN service location; and 3 receiving prior authorization from BUNN that the defective equipment is under warranty.Accordingly, statements by suchCool Froth, DBC, Dr. Brew stylized Dr. design, Dual, Easy Pour, EasyClear, EasyGard, FlavorGard, Gourmet Ice, Gourmet. Juice, High Intensity, iMIX, Infusion Series, Intellisteam, My Cafe, Phase Brew, PowerLogic, Quality Beverage Equipment. Worldwide, Respect Earth, Respect Earth with the stylized leaf and coffee cherry design, SafetyFresh, savemycoffee.com. ScalePro, Silver Series, Single, Smart Funnel, Smart Hopper, SmartWAVE, Soft Heat, SplashGard, The Mark of Quality in. Beverage Equipment Worldwide, ThermoFresh, Titan, trifecta, TRIFECTA sylized logo, Velocity Brew, Air Brew, Beverage. Bar Creator, Beverage Profit Calculator, Brew better, not bitter., BuildADrink, BUNNSource, Coffee At Its Best, Cyclonic. Heating System, Daypart, Digital Brewer Control, Element, Milk Texturing Fusion, Nothing Brews Like a BUNN, Picture. Prompted Cleaning, Pouring Profits, Signature Series, Sure Tamp, Tea At Its Best, The Horizontal Red Line, Ultra are

eitherIntroduction.4. Recommended Daily Cleaning.4. Operating Controls.6. Troubleshooting.10. Service.14. Component Access.14. Bag Sensor.15. Motor and Grind Chamber.16. Capacitor.30. Circuit Breaker.31. Hopper Selector Switch.32. Batch Selector Switch.36. Potentiometer.37. Rectifier.38. Relay.39. Hopper Slide Plates.43. Solenoid.45. Timer.46. Control Board.50. Membrane Switch.52. EMI Filter.54. Funnel Sensing Coil.55. Memory Clock Board.56. Display Board.57.

<http://familymn.com/images/boston-acoustics-cr400-manual.pdf>



Wiring Schematics.58The equipment is onlyAdequate space must be available above the grinder to raise the lidThe grind is preset at the factory to drip specifications as set forth by the United States Department of Commerce and adopted by the Coffee Brewing Center of the Pan American Coffee Bureau. Adjustments may be madeCare should be taken not to scratch the hopper or windows with anyOperating Manuals for CLEANING.FPG2.Three pounds in each hopper. MHG.Five pounds in each hopper. G9.Nine pounds. G92, G92T DBC.Six pounds in each hopper. G9WD.Five pounds. G1.One pound. G2.Two pounds. G3.Three pounds. G2 trifecta.Two poundsStep 3 Remove four screws in front housing panel. Figure 3. Step 5 Replace housing panel and secure four screws. Figure 3. Figure 1. Figure 2. Figure 3. Figure 4Grind Pad a. Pressing ends the operation of the grinder.Pressing the copyright pad allows programming access.Pads dPads e. Press button to select small, medium or large batch size.Model G92. OFF upper position Switching to this position stops all operation of the grinder. ON middle position The switch will return to this position after a grind cycle has begun and will remainSTART lower, momentary position Pressing the switch initiates a timed grind cycle. Hopper Selector Switch. Left Switching to this position allows beans to be dispensed from theRight Switching to this position allows beans to be dispensed from theBatch Selector Switch Optional. Urn Switching to this position allows the correct amount of beans to beCARAFE Switching to this position allows the correct amount of beansThe dispense timer controls the amount of beans that will leave the hopper in a grind cycle. The timer canThe scale is from 0.4 to 150.0 seconds. Refer toModel G9. OFF left position. Placing the switch in this position stops the operation of the grinder. ON center, resting position.

<http://ferramentafranza.com/images/boston-acoustics-cr-75-manual.pdf>



The switch will return to this position after a grind cycle has begun and will remain in this START right, momentary position. Placing the switch in this position initiates a timed grind cycle. URN Switching to this position allows the correct amount of beans to be dispensed when grinding a large batch. CARAFE Switching to this position allows the correct amount of beans to be dispensed when grinding a small OFF upper position. Switching to this position stops the operation of the grinder. The switch will return to this position after a grind cycle has begun and will remain in this position after grinding has ceased. START lower, momentary position. Pressing the switch initiates grinding only when a bag is in place behind the chute. Grind Selector. Allows the user to vary the grind for each bag of coffee. Each setting will provide precisely the same grind every time it is Bag Sensor. Prevents the grinder from operating unless the back of a bag is in place behind the dispense chute. Do not attempt to bypass this safety device. Models LPG, LPG2E. ON middle position The switch will return to this position after a grind cycle has begun START lower, momentary position Pressing the switch to this position and releasing initiates a grind cycle. LEFT Switching to this position allows beans to be ground from the left hopper. RIGHT Switching to this position allows beans to be ground from the right hopper. Model MHG. Pressing initiates a timed grind cycle. Pressing ends the operation of the grinder. These pads are located on the funnel depictions on each side of the grinder with a total of 6 pads. Selecting one Example Selecting the lower pad on the left side will grind enough beans from the left hopper of the grinder to Control Board. The control board determines the amount of beans that will leave the hopper in a grind cycle. The timer portion The scale is from 0.4 to Model G92T DBC. Grind Pad a Pressing initiates a timed grind cycle. The timer portion The scale is from 0.

4 to Model FPG. OFF upper position Switching to this position stops all operation of ON middle position The switch will return to this position after a grind START lower, momentary position Pressing the switch to this position Select Small, Medium or Large batch by turning the round selector knob Grind Pad a. Pressing GRIND initiates a timed grind cycle. Pressing STOP ends the operation of the grinder. These pads are located on the funnel depictions on each side of the grinder with a total of 6 pads. Selecting Example Selecting the lower pad on the left side will grind enough beans from the left side of the grinder Control Board. The timer portion can be adjusted to dispense a different amount from each hopper and each batch size. The scale is from 0.4 Technical Service

Department. Shorting of terminals or the application of external voltages may result in board failure. Board failure will normally be permanent. If an intermittent condition is encountered, the cause will likely be a switch contact or a loose connection. Probable Cause. Remedy. Grinder will not start. Start switch to the "START" position. Model LPG with capacitor Breaker for testing procedure. Refer to Service Timer for testing. Problem. Probable Cause. Grinder will not start. Continued. Each motor is equipped with a Refer to Service Relay for testing. Switch for testing and adjustment. Grinder will not shut off. Switch for testing procedures. Refer to Service Timer for testing. Refer to Service Relay for testing. Switch for testing procedures. Probable Cause. Grinder starts, but will not dispense. Begin each grind cycle by visually. Foreign materials must not block. Refer to Service Solenoids for testing procedures. Refer to Service Timer for testing. Incorrect amount of coffee. Refer to Service Solenoids for testing procedures. Refer to Service Solenoids for testing procedures. Remove both black fillister head. Inspect the shear plate for wear. Replace if excessively worn or damaged. Refer to the Adjustment section. Manual.

<http://www.psstrecno.sk/wp-content/plugins/formcraft/file-upload/server/content/files/1626d270d29823---california-child-care-licensing-manual.pdf>

Refer to Service Snubber for replacement procedures. Manual. Excessive chaff. Replace the dechaffer springs. Replacement dechaffer springs are. Grinder only dispenses from one. LPG2E only. Refer to Service Hopper selector. Timer will not display or displays. Incorrect weight of coffee dispensed. Refer to GRINDER SCALE CALIBRATION procedure. Do not touch funnel or funnel handle during grinding operation. Troubleshooting for assistance in determining the. WARNING Inspection, testing, and repair of electrical equipment should be performed only by qualified. WARNING Unplug the grinder before the removal of. All components are accessible by the removal of the. Component Locations. Some pictures showing component locations may be. BAG SENSOR SWITCH Models G1, G2, G3 or. If voltage is present as described, proceed to. If voltage is not present as described, refer to the. Wiring Diagrams and check the grinder wiring. If continuity is present as described, reconnect the. If continuity is not present as described, replace the. Removal and Replacement. The bag sensor switch is located inside the lower. Test Procedure. Switch. Terminal "A". The indication must be. Disconnect the grinder from the power source. If voltage is present as described replace the motor. If voltage is not present as described, reconnect the. Removal and Replacement. Motor. Refer to FIG.6. Remove dial plate and. The motor is located inside the upper part of the. Test Procedure. This resets the motor protection circuit and may. If the grinder stops operating shortly after starting, refer. Remove the electrical access panel at the rear of. AC MOTOR AND GRIND CHAMBER cont. Operating Manual, and reset the burrs. Relay N.O.K4. WHI to Cordset 120V. GRN to Ground 120VAC MOTOR AND GRIND CHAMBER cont. NOTE Refer to ADJUSTMENTS in the Installation and Operating Manual, and reset the burrs. Removal and Replacement Grind Chamber Fig. 5. Replace if excessively worn or damaged. Inspect shear plate. 4. Replace if excessively. NOTE Burrs are serviced in sets of two with hardware.

Disconnect the grinder from the power source. If voltage is not present as described, reconnect the. Removal and Replacement. Motor. Refer to Fig. 8. Remove dial plate and. The motor is located inside the upper part of the grinder. Test Procedures. Press the red "Reset". Listen carefully for a "click". This resets the motor protection. If the grinder stops operating shortly after starting, refer. BLU to BLU from Rectifier. Relay 3. RED to Rectifier. NOTE Burrs are serviced in sets of two with hardware. Removal and Replacement Grind Chamber. Refer. NOTE Refer to ADJUSTMENTS and reset the burrs. Removal and Replacement. On Model LPG. The motor is located inside the hopper assembly. Test Procedures. On Model LPG. If continuity is present the overload is good. If continuity is not present the overload will not reset. The ohm reading should. If ohm readings. If readings. NOTE Clean all grind burrs and mounting surfaces. NOTE Steps 5 thru 12 apply only to Model LPG2E. Set aside for. Repeat for opposite. Spacer Plate. Mounting Ring, Solenoid and Solenoid Mounting. Plate. NOTE If

burrs need to be replaced, they must be replaced in matched pairs. Place slide set aside for the dechaffer spring plates are located in the burr. The motor is located in the upper wrapper under the. This resets. Remove both 632 screws beneath the upper front. Remove the six 1032, hex head screws on top of the. Slowly slide the assembly out the rear of the grinder. Mount the new motor and tighten the four bolts and. Slide the motor mounting plate into the rear of the. Feed the wiring harness into the top of the housing. Reinstall the six 1032 hex head screws through the. Reattach the green wire to the 1032 stud on the motor. Refer to the illustration below when reconnecting the. If the grinder remains unable to start, proceed to step 2. If the grinder stops operating shortly after starting, refer to YEL to Snubber. Disconnect the grinder from the power supply. Remove the electrical access panel at the rear of the. Connect the grinder to the power supply.

The indication. Disconnect the grinder from the power supply. If voltage is present as described and the grinder remains. If voltage is not present as described, refer to the Wiring Diagrams, and check the grinder wiring harness. GRN to Chassis Ground. Removal and Replacement MOTOR MOTOR Models G9, G92, MHG. Adjusting Screw Burr Housing Cap Rotor Cup. Shear Plate. Removal and Replacement GRIND CHAMBER. Replace if excessively worn or damaged. Inspect the shear. Replace if excessively worn or damaged. Replace if excessively worn or damaged. The burrs will not properly seat. Operating Manual to vary the grind dispensed. NOTE Burrs must be replaced as a set. SNUBBER Models G9, G92, MHG. YEL to Snubber. The snubber is located at the back of the motor. YEL to Snubber. Removal and Replacement Grinder Scale Model G9WD only. Replace the funnel in the funnel rails. The grinder will go through a calibration, and then return to the main. The grinder is now ready calibrated and ready for normal operation. PASSWORD" menu. Capacitor Model LPG only. Slide the lower tab of the. Pla. Mom. Grin. The capacitor is located inside the front panel of. Test Procedure. If the motor. Circuit Breaker Models LPG, LPG2E, FPG, FPG2 DBC. Removal and Replacement RED from Motor. LPG2E. BLK from Start Switch. LPG. The circuit breaker is located on the rear of the. BLK from Power Cord. Continuity must be present between the terminals. If continuity is present as described the circuit breaker. If continuity is not present as described, press reset. Hopper Selector Switch Model LPG2E only. If continuity is not present as described, reconnect the. If continuity is present replace the switch. The Hopper Selector Switch is located in the. Test Procedure. BLU to Timer P14. BLU. If continuity is not present as described, replace the. Hopper Selector Switch Model G92 only. Removal and Replacement. The hopper selector switch is located in the center. Test Procedure. ORA to Timer P16. BLU to Timer P18.

YEL to Timer P11. If continuity is present as described, reconnect the. If continuity is not present as described, replace the. If continuity is not present as described, replace the. Location. Test Procedure. VIO to timer P12. BLK to Cordset. BLK to timer P41. Black. BLU to SW2. PNK to Intf conn. 2. White. Ground. Grinders with Digital Timer. If continuity is not present as described, refer to the. Wiring Diagrams and check the grinder wiring harness. VIO to timer P12. BLK to Cordset. Continuity must not be. BLK to timer P41. Grinders with Analog Timer. If continuity is not present as described, replace the. If continuity is present as described, the switch is. If continuity is not present as described, replace. Location. Test Procedure. If continuity is not present as described in one or both. Batch Selector Switch Model FPG. If continuity is present at all positions, the switch is. If continuity is not present at any position, replace the. Removal and Replacement. The batch selector switch is located on the left front. Test Procedure. ORN to TIMER. TAN to POTENTIOMETER. GRY to POTENTIOMETER. PNK to POTENTIOMETER. Potentiometer Model FPG. If continuity is not present at any position, replace the. Removal and Replacement. The potentiometer switches are located on the top. Test Procedure. Turn the knob for the SMALL potentiometer all the. The meter should read Source Exif Data File Type PDF. File Type Extension pdf. PDF Version 1.6. Linearized Yes. Tagged PDF Yes. Create Date 20141107 1317220600. Modify Date 20150120 1339480600. Metadata Date 20150120 1339480600. Creator Tool Adobe InDesign CC 2014 Macintosh. Instance ID uuid276108c79265422eb50a56448258a8f4. Original Document ID adobedocidindd7131df6b75a911dd8228b99abb6fc736. Version ID 1.

Document ID xmp.ide43bfe9b286040fc91adb0869e9d7c71. Rendition Class proofpdf. Derived From Instance ID xmp.iidd2f2ee3a5e784e3e93a9b558ad7275a3. Derived From Document ID adobedocidindd7131df6b75a911dd8228b99abb6fc736. Derived From Version ID 1.

Derived From Original Document ID adobedocidindd7131df6b75a911dd8228b99abb6fc736. Derived From Rendition Class default. History Action converted. History Software Agent Adobe InDesign CC 2014 Macintosh. History When 20141107 1317220600. Title service, repair, Grinders Service and Repair Manual. Description Service and Repair Manual for the MHG, FPG, FPG2, LPG2, G1, G2, G3, G2 trifecta, G9, G9WD, G92 and G92T DBC Grinders. Subject MHG, FPG, FPG2, LPG2, G1, G2, G3, G2 trifecta, G9, G9WD, G92 and G92T DBC. Grinders, Service Manual, Repair Manual, Coffee Bean Grinders. Producer CIDEON PdfEditor V 3.1.119.0. Trapped False. Keywords; MHG; FPG; FPG2; LPG2; G1; G2; G3; G2 trifecta; G9; G9WD; G92 and G92T DBC. Grinders; Service Manual; Repair Manual; Coffee Bean Grinders. Page Count 79. Creator Adobe InDesign CC 2014 Macintosh. The equipment is only for indoor use on a sturdy counter or shelf. ON middle position The switch will return to this position after a grind cycle has begun and will remain in this position after grinding has ceased. Page 7 7 URN O F F S T A R T ON CARAFE P1300 Batch Selector Switch Optional URN Switching to this position allows the correct amount of beans to be dispensed when grinding a large batch. CARAFE Switching to this position allows the correct amount of beans to be dispensed when grinding a small batch. Page 8 8 Model G92T DBC Grind Pad a Pressing initiates a timed grind cycle. Page 10 10 TROUBLESHOOTING A troubleshooting guide is provided to suggest probable causes and remedies for the most likely problems encountered. If the problem remains after exhausting the troubleshooting steps, contact the BunnOMatic T echnical Ser vice Department. Page 11 11 TROUBLESHOOTING cont. Problem Probable Cause Remedy Each motor is equipped with a temperature and current overload protection feature which will im mediately shut off the motor when an overload has occurred. Check the grinder for obstructions. Refer to Service Motor for testing pro cedures.

Page 12 12 Begin each grind cycle by visually inspecting the hoppers for ample supplies of whole bean coffee. Foreign materials must not block the openings at the bottom of the hoppers. Refer to Service Solenoids for test ing procedures. Refer to Service Timer for testing procedures. Page 13 13 PROBLEM PROBABLE CAUSE REMEDY TROUBLESHOOTING cont. Incorrect coffee grind dispensed. Excessive chaff Grinder only dispenses from one hopper Timer will not display or displays incorrectly. Incorrect weight of coffee dis pensed 1. Burr adjustment 1. Page 14 14 SERVICE This section provides procedures for testing and replacing various major components used in this grinder should service become necessar y. Refer to T roublesleshooting for assistance in determining the cause of any problem. Page 15 15 SERVICE Cont. FIG. 1 BAG SENSOR SWITCH P1704 Location The bag sensor switch is located inside the lower front of the grinder housing behind the coffee dispens ing chute. T est Procedure 1. Disconnect the grinder and place a coffee bag behind the dispense chute. Page 16 16 SERVICE Cont. AC MOTOR AND GRIND CHAMBER FIG. 3 AC MOTOR AND GRIND CHAMBER P1704 Location The motor is located inside the upper part of the grinder housing. T est Procedure 1. Remove the plug located on the right side of the housing. Press the red "Reset" button visible through the opening. Clean all grinding burrs and mounting sur faces before reassembly. 12. Install the four. Page 18 18 SERVICE Cont. FIG. 5 GRIND CHAMBER COMPONENTS P1708 20 7 6 4 5 16 18 1 19 17 11 10 9 8 3 2 1 13 7 12 14 15 AC MOTOR AND GRIND CHAMBER cont. Removal and Replacement Grind Chamber Fig. 5 1. Loosen the two set screws 16 securing the grind selector knob to the grind selector dial plate 18 and remove knob. Page 19 19 SERVICE Cont. DC MOTOR AND GRIND CHAMBER G1MD ONL Y FIG. 6 DC MOTOR AND GRIND CHAMBER P1706 Location The motor is located inside the upper part of the grinder housing. T est Procedures 1. Remove the rear panel.

Press the red "Reset" button visible on the rear of the motor. Remove motor and bracket out the

rear of the grinder housing. Page 21 21 SERVICE Cont. DC MOTOR AND GRIND CHAMBER G1MD ONLY cont. FIG. 8 MOTOR AND GRIND CHAMBER REMOVAL P1711 5 7 6 16 18 1 19 17 9 8 11 10 3 4 2 1 7 13 12 14 15 22 21 20 23 11. Page 22 22 SERVICE Cont. P1022 Location The motor is located inside the hopper assembly. Page 26 26 SERVICE Cont. 2. The entire wiring harness must be fed into the bottom of the grinder housing through the hole in the motor mounting plate. 3. Remove both 632 screws beneath the upper front inspection panel. 4. Remove the six 1032, hex head screws on top of the motor mounting plate. Test Procedure 1. Disconnect grinder from the power source. 2. Visually inspect the capacitor for leakage. If leakage is visible, replace the capacitor. Page 31 31 SERVICE Cont. Circuit Breaker Models LPG, LPG2E, FPG, FPG2 DBC P1036 FIG. 22 CIRCUIT BREAKER P1037 FIG. 23 CIRCUIT BREAKER TERMINALS RED from Motor LPG2E BLK from Start Switch LPG BLK from Power Cord Removal and Replacement 1. Remove the wires from the circuit breaker. Page 32 32 SERVICE Cont. P1038 Hopper Selector Switch Model LPG2E only P1029 Location The Hopper Selector Switch is located in the lower left front of the hopper housing. Test Procedure 1. Disconnect grinder from the power supply. 2. Remove all wires from the switch terminals. Page 33 33 SERVICE Cont. Hopper Selector Switch Model G92 only FIG. 26 HOPPER SELECTOR SWITCH P594 Location The hopper selector switch is located in the center on the front of the hopper housing. Test Procedure 1. Disconnect the grinder from the power source. Test Procedure 1. Disconnect the grinder from the power supply. 2. Remove the tan, yellow and green wires from the switch. Page 36 36 SERVICE Cont. FIG 32 BATCH SELECTOR SWITCH Location The batch selector switch is located on the left front of the hopper housing. Test Procedure 1. Disconnect the grinder from the power source. 2.

<https://www.becompta.be/emploi/3gs-iphone-manual-pdf>